

3.3.1 Walkways, Patios & Driveways

POSSIBLE TERMITE TREATMENT

FRONT PORCH

Recommendation

Contact a qualified professional.



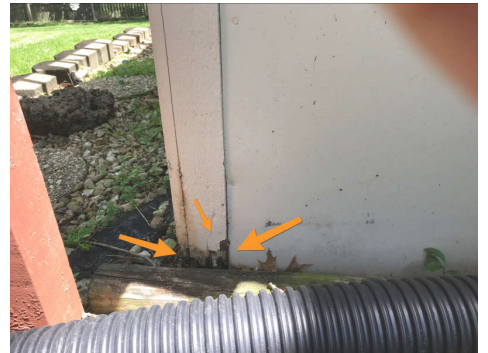
3.4.1 Decks, Balconies, Porches & Steps

SHED SIDING ROTTEN AND PEELING PAINT

SHED UNDER DECK

Recommendation

Contact a qualified professional.



3.5.1 Eaves, Soffits & Fascia

FASCIA - ROTTED

SOUTHEAST AND NORTHWEST SIDE OF HOUSE

One or more sections of the fascia are rotted. Recommend qualified roofer evaluate & repair.

Recommendation

Contact a qualified roofing professional.



4.1.1 Foundation

FOUNDATION CRACKS - MINOR

EAST SIDE OF HOUSE

Minor cracking was noted at the foundation. This is common as concrete ages and shrinkage surface cracks are normal. Recommend monitoring for more serious shifting/displacement.

[Here is an informational article](#) on foundation cracks.

Recommendation

Contact a qualified structural engineer.



7.2.1 Main & Subpanels, Service & Grounding,
Main Overcurrent Device

MAIN PANEL COVER MISSING SCREW

BASEMENT

Recommendation

Recommended DIY Project

 Safety Hazard

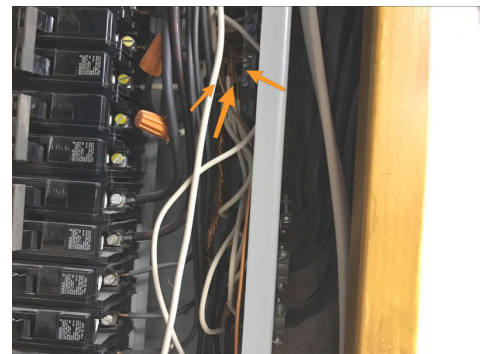


7.2.2 Main & Subpanels, Service & Grounding, Main Overcurrent Device

DOUBLE TAPPED NEUTRAL WIRES

Recommendation

Contact a qualified electrical contractor.



7.3.1 Branch Wiring Circuits, Breakers & Fuses

IMPROPER WIRING

BASEMENT UTILITY ROOM AND BASEMENT BAR

Improper wiring needs attention.

Recommendation
Contact a qualified electrical contractor.



Basement

7.3.2 Branch Wiring Circuits, Breakers & Fuses

IMPROPER ELECTRICAL RECEPTACLE INSTALLATION

ON SHED UNDER DECK

Recommendation

Contact a qualified professional.

 Safety Hazard



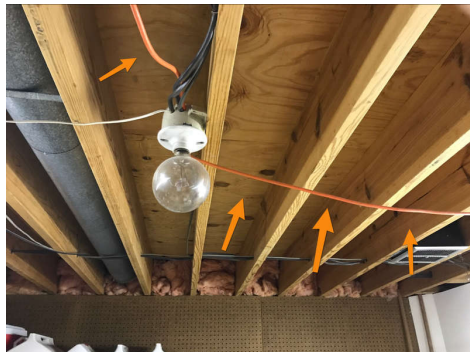
7.3.3 Branch Wiring Circuits, Breakers & Fuses

IMPROPER ELECTRICAL WIRING

BASEMENT UTILITY ROOM

Recommendation

Contact a qualified electrical contractor.



7.3.4 Branch Wiring Circuits, Breakers & Fuses

SPLIT ELECTRICAL WIRE



WEST CORNER OF GARAGE UNDER LIGHT FIXTURE

Recommendation

Contact a qualified professional.



7.4.1 Lighting Fixtures, Switches & Receptacles

COVER PLATES MISSING

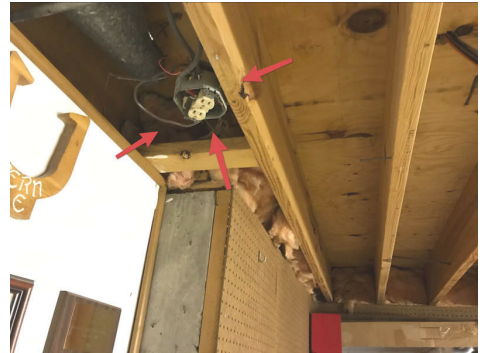


UTILITY ROOM IN BASEMENT

One or more receptacles are missing a cover plate. This causes short and shock risk. Recommend installation of plates.

Recommendation

Contact a qualified electrical contractor.



7.5.1 GFCI & AFCI

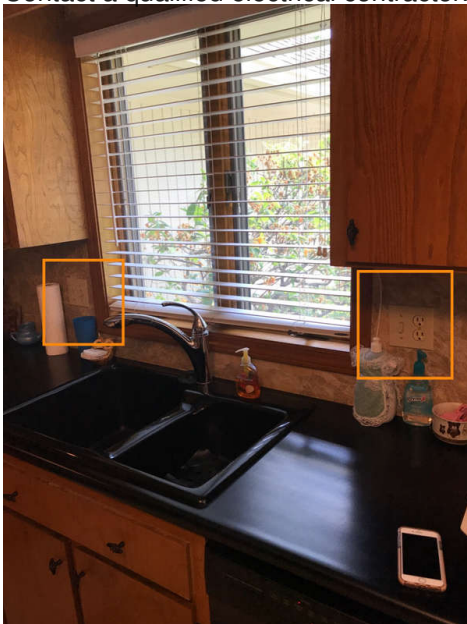
NO GFCI PROTECTION INSTALLED

No GFCI protection present in all locations. Recommend licensed electrician upgrade by installing ground fault receptacles in all locations.

[Here is a link](#) to read about how GFCI receptacles keep you safe.

Recommendation

Contact a qualified electrical contractor.



Kitchen



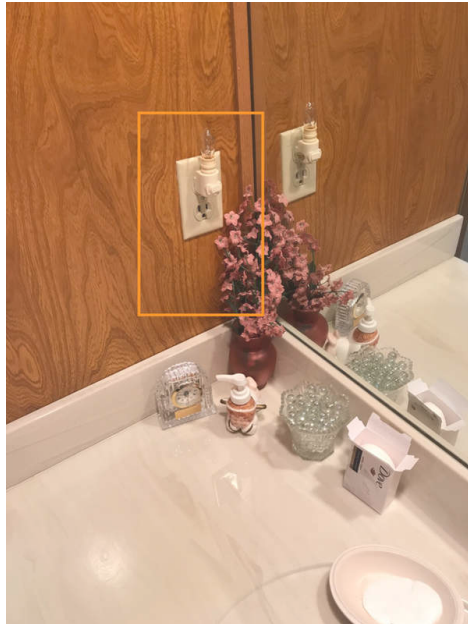
North Side of House on Patio



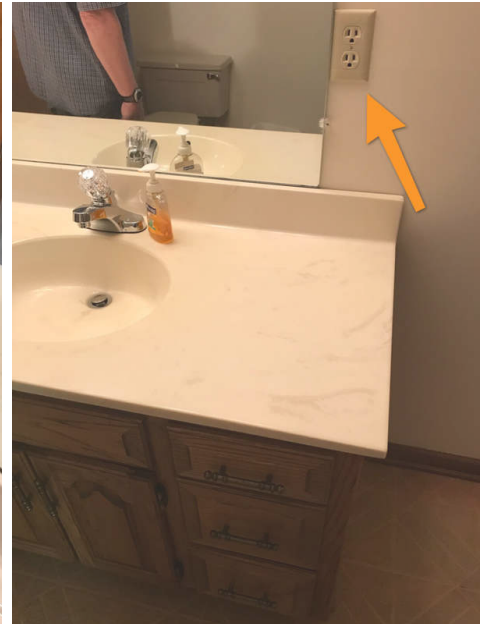
Wet bar



North Side of House on Deck



Bathroom (hallway)



Basement Bathroom

8.3.1 Water Supply, Distribution Systems & Fixtures

JETTED TUB PUMP LEAKING

Water dripping observed while jetted tub operating. Recommend inspection and repair by a plumbing professional.

Recommendation
Contact a qualified professional.



Tub Motor Access in Stairway



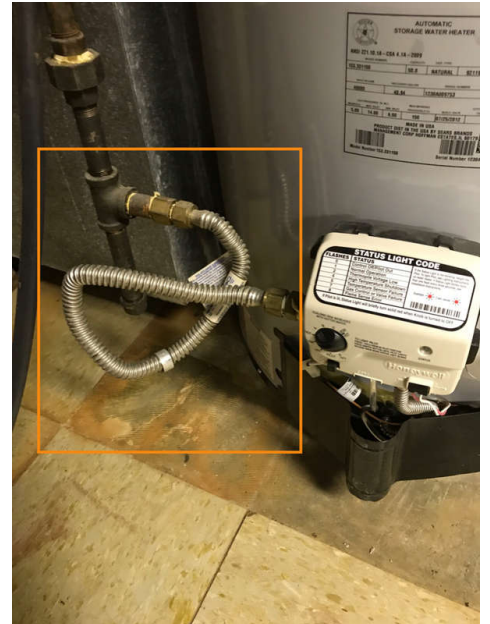
Tub Motor Access in Stairway

8.4.1 Hot Water Systems, Controls, Flues & Vents

CORRUGATED STAINLESS STEEL SUPPLY LINE

Recommend replacement with iron; susceptible to lightning strike.

Recommendation
Contact a qualified plumbing contractor.



Basement

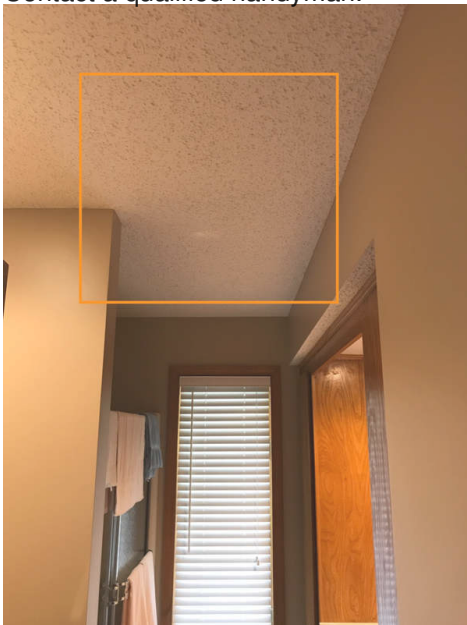
9.4.1 Exhaust Systems

BATHROOM VENT MISSING

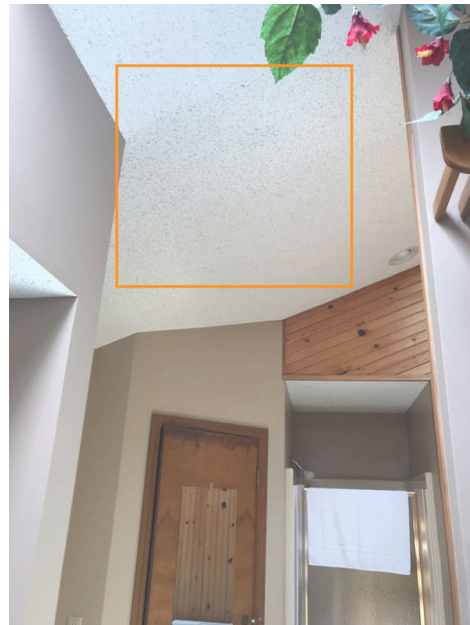
Master Bathroom needs bathroom vent.

Recommendation

Contact a qualified handyman.



Hallway Bathroom



Master Bathroom

10.1.1 Doors

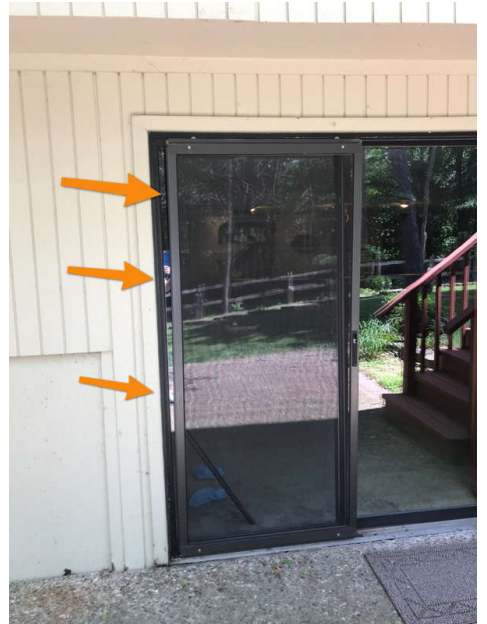
DOOR LATCH ALIGNMENT

NORTH BASEMENT ENTRY

Door latch and/or strike plate is out of alignment. Recommend a handyman repair.

Recommendation

Contact a qualified door repair/installation contractor.



Basement Exterior Door

10.2.1 Windows

FAILED SEAL

NORTH WALL IN MASTER BEDROOM

Seal separated from window frame; not allowing casement window to properly close. Recommend securing to allow window to completely close.

Recommendation

Contact a qualified window repair/installation contractor.



10.2.2 Windows

MINOR CRANK DAMAGE

SOUTHWEST MAIN FLOOR BEDROOM

Minor cosmetic damage to crank. Window still opens properly.

Recommendation

Recommended DIY Project



10.3.1 Floors

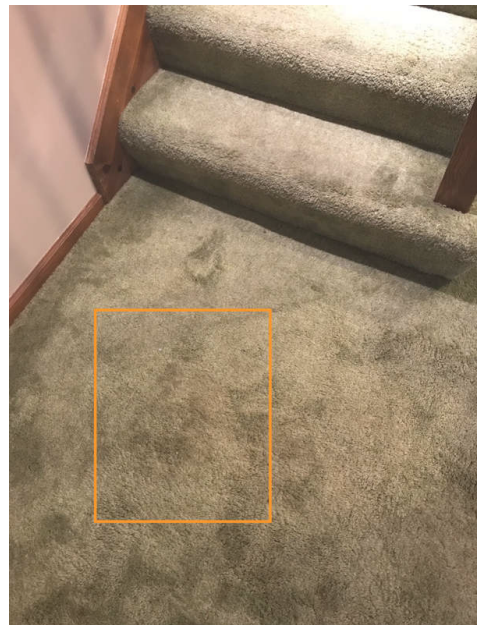
CARPET STAINS

STAIRS TO THE BASEMENT

Carpet had areas of staining or discoloration. Recommend a thorough steam clean by a qualified carpet cleaning company

Recommendation

Contact a qualified cleaning service.



Basement

10.5.1 Ceilings

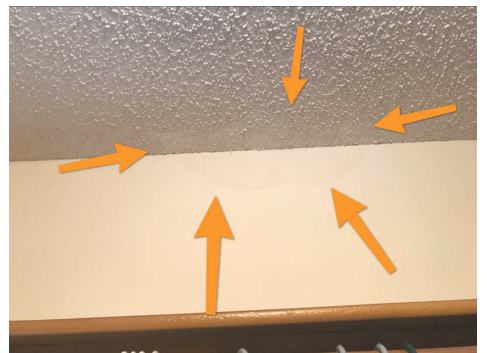
STAIN(S) ON CEILING

MASTER BEDROOM CLOSET

There is a stain on ceiling/wall that requires repair and paint. Source of staining should be determined.

Recommendation

Contact a qualified professional.



Bedroom closet

12.2.1 Floor

CRACKING

Cracking visible in the garage floor. I recommend a structural engineer evaluate.

Recommendation

Contact a qualified structural engineer.



Garage