

SUMMARY

1234 Main St. Florence AL 35633

Buyer Name
01/31/2018 9:00AM

Kel Thomas
AL Licensed Inspector # HI-4205
Singing River Property Inspections
256-349-3815
kt@singingriverinspections.com



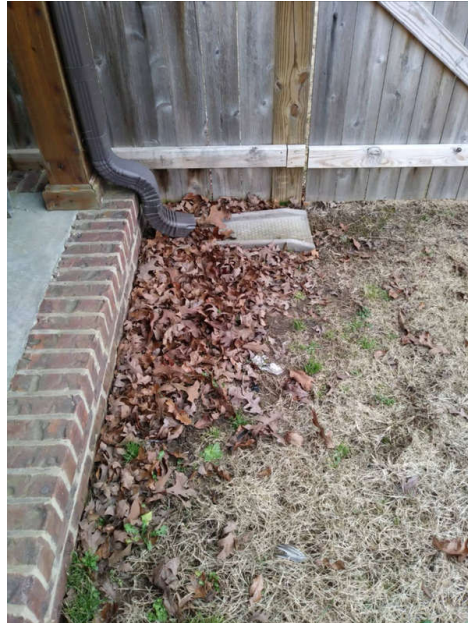
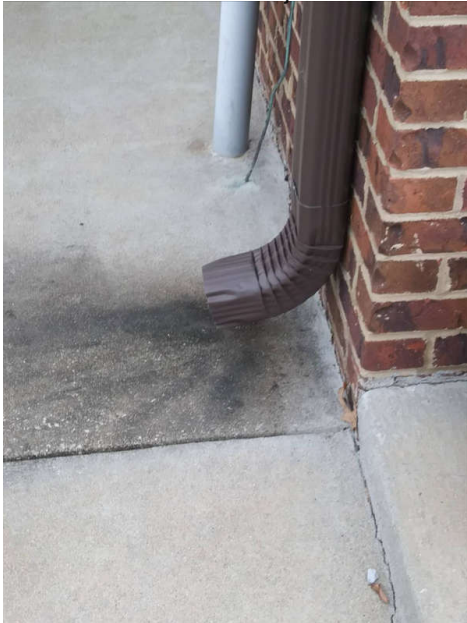
2.2.1 Roof Drainage Systems

DOWNSPOUTS DRAIN NEAR HOUSE

One or more downspouts drain too close to the home's foundation. This can result in excessive moisture in the soil at the foundation, which can lead to foundation/structural movement. Recommend installation or adjusting downspout extensions to drain at least 6 feet from the foundation.

[Here is a helpful DIY link](#) and video on draining water flow away from your house.

Recommendation
Recommended DIY Project



4.2.1 Safety

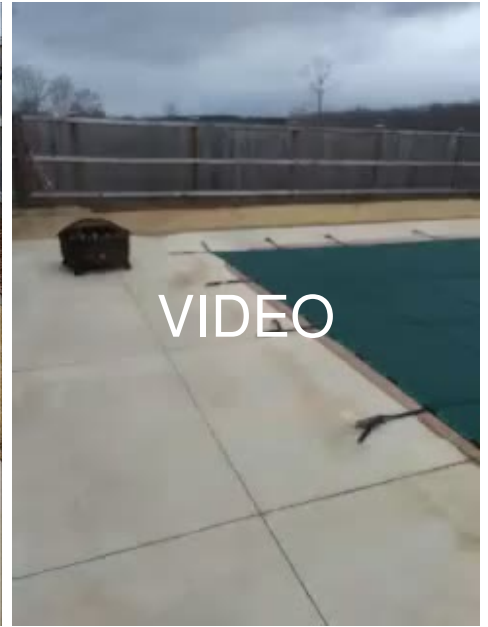
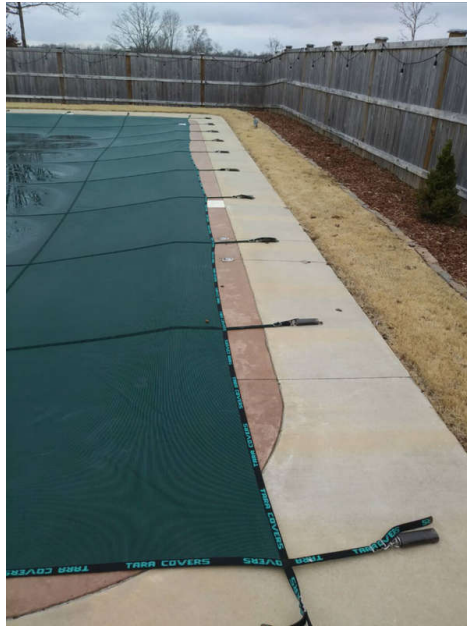
SAFETY BARRIER

INGROUND POOL

Recommendation
Contact a qualified professional.



Safety Hazard



VIDEO

6.5.1 Roof Structure & Attic

ILL FITTING HATCH

2ND FLOOR HALLWAY CLOSET ATTIC ACCESS

It is recommended to repair/refit attic access hatch. This repair will increase energy efficiency by restricting heated or cooled air from escaping into the attic.

Recommendation

Contact a handyman or DIY project



10.2.1 Main & Subpanels, Service & Grounding, Main Overcurrent Device

BUSHING MISSING

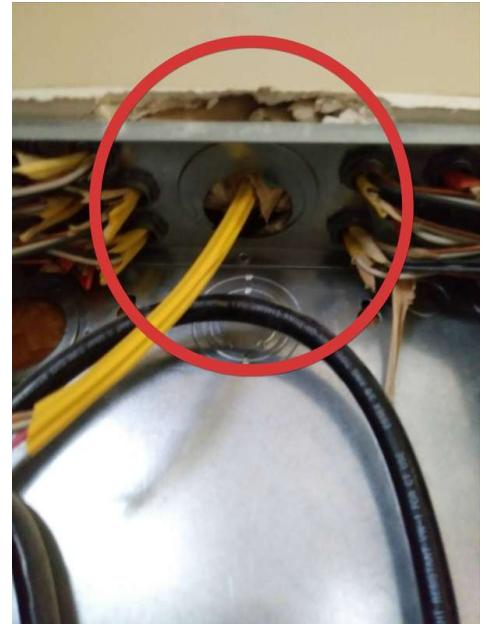
It is recommended that a bushing be added to the top conductor access port to prevent the possibility of conductor insulation damage due to sharp edges. Such a situation could pose a shock hazard.

Recommendation

Contact a qualified professional.



Safety Hazard



11.4.1 Hot Water Systems, Controls, Flues & Vents

WATER TEMPERATURE TOO HIGH



Safety Hazard

Recommend regulating water temperature to a lower temperature level to no more than 120F to prevent the possibility of scalding. Especially with young children.

Recommendation

Recommended DIY Project

11.4.2 Hot Water Systems, Controls, Flues & Vents

INSUFFICIENT CAPACITY

Water heater may not have the capacity necessary to supply sufficient water to the home. Recommend evaluating options to replace water heater with a larger capacity tank, as necessary.

Recommendation

Contact a qualified plumbing contractor.

12.1.1 General

DRYER VENTING

Currently, the dryer vents directly to the exterior to just above grade level. There is no flapper to prevent rodents or water intrusion entering the vent. In addition, the dryer vent tubing appears to be too long for this application. It is recommended to evaluate and correct as needed.



13.3.1 Toilets

TOILET SEAT LOOSE

2ND FLOOR BATHROOM

Toilet seat is loose. Recommend tightening to prevent further loosening.

Recommendation

Contact a handyman or DIY project



14.2.1 Windows

MISSING OR DAMAGED SCREEN

Window missing or damaged screen in numerous locations. Recommend replacement.

Recommendation

Contact a qualified window repair/installation contractor.



16.1.1 Countertops & Cabinets

CABINET HINGE LOOSE

KITCHEN

One or more cabinet hinges were loose. Recommend a qualified handyman or DIY repair.

[Here is a helpful DIY article on cabinet repairs.](#)

Recommendation

Contact a handyman or DIY project

