



2.1.1 A. Foundations

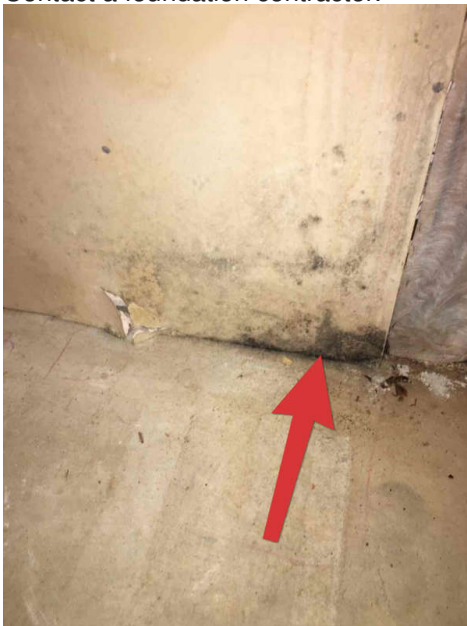
**WATER PENETRATION**

UNDER STAIRS STORAGE AREA



Crawl/storage space under the interior staircase show signs of water penetration.

Recommendation  
Contact a foundation contractor.



Floor joists showing deterioration



2.2.1 B. Grading and Drainage

**NEGATIVE GRADING**

EAST SIDE OF HOUSE

Negative grading on the east side of building

Recommendation

Contact a qualified landscaping contractor

 Recommendation



2.11.2 K. Porches, Balconies, Decks, and Carports

**PATIO AT REAR OF HOUSE HAS NO GUARDRAIL.**

Decks 30 inches above grade are required to have a guardrail.

Recommendation

Contact a qualified deck contractor.

 Recommendation

4.3.1 C. Duct System, Chases, and Vents

**TEMPERATURE DIFFERENTIAL**

ATTIC

The temperature differential is only 7 degrees (F) and should be 15-20 degrees (F). I would recommend having a HVAC contractor do a thorough inspection.

Recommendation

Contact a qualified HVAC professional.

 Recommendation